

Compensation Beads

Catalog# / Size	424601 / 25 tests 424602 / 100 tests
Regulatory Status	RUO
Other Names	Compensation, Comp Beads
Description	<p>Compensation Beads can bind fluorescently tagged mouse, rat, rabbit, donkey, hamster and human antibodies. Each kit contains 1 dropper bottle of negative beads and 1 dropper bottle of positive beads. The positive beads will bind any mouse, rat, rabbit, donkey, hamster or human antibody and the negative beads will not bind any antibody. Compensation Beads can be used as compensation controls for multicolor flow cytometry assays.</p> <p>Compensation Beads can be used for dyes excited by blue (488 nm), green (532 nm), yellow/green (561 nm), violet (405 nm), ultraviolet (355 nm), and red (633-635 nm) lasers.</p>

Product Details

Formulation	Each kit will contain sets of two dropper bottles as listed below: <ol style="list-style-type: none">1. Negative beads2. Positive beads
Preparation	Compensation Beads are supplied ready to use, 1 drop (~25-30 µL) from each bottle is sufficient for one test.
Storage & Handling	Store the kit at 2°C - 8°C upon receipt.
Application	FC - Quality tested
Recommended Usage	1 drop of positive beads plus one drop of negative beads
Application Notes	<p>Compensation Beads can bind mouse, rat, rabbit, donkey, hamster and human monoclonal or polyclonal antibodies. Product is a kit of one positive beads bottle and one negative beads bottle. Compensation Beads can be used as compensation controls for multicolor flow cytometry assays or in any other assay that require antibody binding beads.</p> <p>Protocol for using Compensation Beads:</p> <ol style="list-style-type: none">1. Vortex beads vigorously prior to using to disrupt aggregates that may have formed during storage.2. Prepare tubes with appropriate antibodies (single color).3. Add one drop of beads from each bottle (positive and negative).4. Mix and incubate at room temperature for 15-20 minutes, protected from exposure to light.5. Wash beads with Cell Staining Buffer (Cat. No. 420201) or equivalent.6. Centrifuge at 350Xg for 5 minutes and re-suspend in Cell Staining Buffer or equivalent. Beads are ready to acquire.

Antigen Details

Gene ID	NA
----------------	----

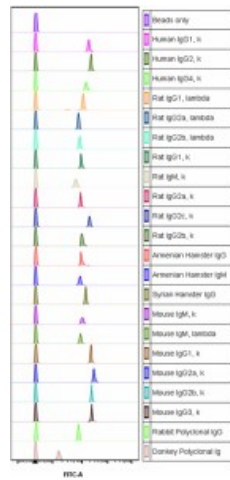
Related Protocols

[Cell Surface Flow Cytometry Staining Protocol](#)

Product Data



Kit content image for the Compensation Beads



Compensation Beads were stained with 23 different FITC-conjugated isotypes of antibodies of mouse, rat, rabbit, donkey, hamster and human origin. Beads were stained with 0.05 µg of antibody per test.

For research use only. Not for diagnostic use. Not for resale. BioLegend will not be held responsible for patent infringement or other violations that may occur with the use of our products.

*These products may be covered by one or more Limited Use Label Licenses (see the BioLegend Catalog or our website, www.biolegend.com/ordering#license). BioLegend products may not be transferred to third parties, resold, modified for resale, or used to manufacture commercial products, reverse engineer functionally similar materials, or to provide a service to third parties without written approval of BioLegend. By use of these products you accept the terms and conditions of all applicable Limited Use Label Licenses. Unless otherwise indicated, these products are for research use only and are not intended for human or animal diagnostic, therapeutic or commercial use.

8999 BioLegend Way, San Diego, CA 92121 www.biolegend.com
Toll-Free Phone: 1-877-Bio-Legend (246-5343) Phone: (858) 768-5800 Fax: (877) 455-9587