

Precision Count Beads™

Catalog# / Size	424902 / 100 tests
Regulatory Status	RUO
Other Names	Counting Beads
Description	Precision Count Beads™ can be used to obtain absolute counts of cells or any other samples acquired on a flow cytometer. Precision Count Beads™ are fluorescent particles about 10µm that can be detected across a broad range of wavelengths (405-635nm excitation and 400-800nm emission). Absolute numbers of cells can be determined by comparing the bead count and cell count. Precision Count Beads™ can work with all kinds of assays including a lyse, no-wash whole blood assay.

Product Details

Formulation	Precision Count Beads™ are supplied in a solution containing 0.02% sodium azide and 0.01% NP40.
Concentration	Lot-specific (to obtain lot-specific concentration and expiration, please enter the lot number in our Certificate of Analysis online tool.)
Storage & Handling	Store between 2°C and 8°C.
Application	FC - Quality tested
Recommended Usage	Vigorously vortex the Precision Count Beads™ bottle for 30-40 seconds to ensure complete mixing and break up of aggregates that may occur during storage. For flow cytometric analysis, the suggested use of this reagent is 100 µl per test. Please read the Precision Count Beads™ protocol and applications for further instructions.
Application Notes	Precision Count Beads™ are designed for counting the absolute number of cells in a complex population and other particles by flow cytometry. Precision Count Beads™ are excited by a variety of lasers including violet (405nm), blue (488nm), yellow/green (562nm), and red (633nm).
Product Citations	<ol style="list-style-type: none">1. Bhattacharya S, <i>et al.</i> 2020. Front Bioeng Biotechnol. 1.055555556. PubMed2. Natoli M, <i>et al.</i> 2021. Front Oncol. 644608:11. PubMed3. Coronel MM, <i>et al.</i> 2020. Sci Adv. 6:eaba5573. PubMed

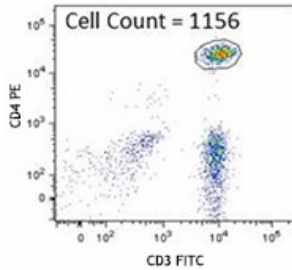
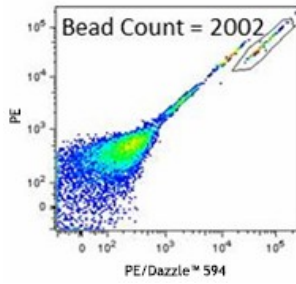
Antigen Details

Gene ID	NA
----------------	----

Related Protocols

[Precision Count Beads™ Protocol and Applications](#)

Product Data



Human peripheral blood lymphocytes were stained with anti-human CD3 FITC/CD4 PE/CD45 PerCP Cocktail using a lyse, no-wash method. Precision Count Beads™ were added and bead count and CD4⁺CD3⁺ cell count was determined by gating on beads and cells as shown, gated on CD45⁺ lymphocytes. The number of total cells is determined as described in the protocol.

For research use only. Not for diagnostic use. Not for resale. BioLegend will not be held responsible for patent infringement or other violations that may occur with the use of our products.

*These products may be covered by one or more Limited Use Label Licenses (see the BioLegend Catalog or our website, www.biolegend.com/ordering#license). BioLegend products may not be transferred to third parties, resold, modified for resale, or used to manufacture commercial products, reverse engineer functionally similar materials, or to provide a service to third parties without written approval of BioLegend. By use of these products you accept the terms and conditions of all applicable Limited Use Label Licenses. Unless otherwise indicated, these products are for research use only and are not intended for human or animal diagnostic, therapeutic or commercial use.

8999 BioLegend Way, San Diego, CA 92121 www.biolegend.com
 Toll-Free Phone: 1-877-Bio-Legend (246-5343) Phone: (858) 768-5800 Fax: (877) 455-9587